

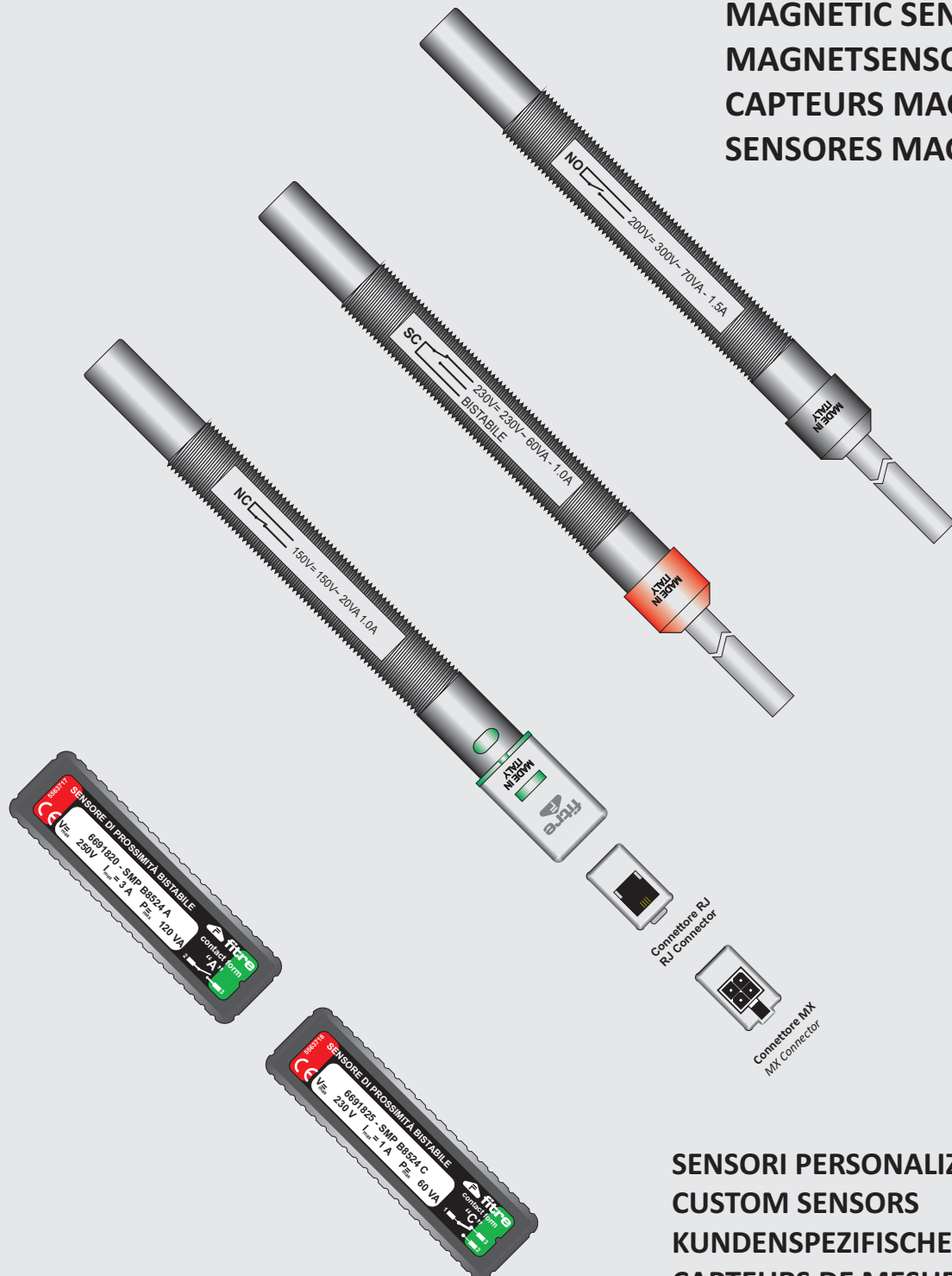


20142 Milano • Italia • via Valsolda, 15
telefono: (+39) 02.8959.01 • telefax: (+39) 02.8959.0400
e-mail: fitre.componenti@fitre.it

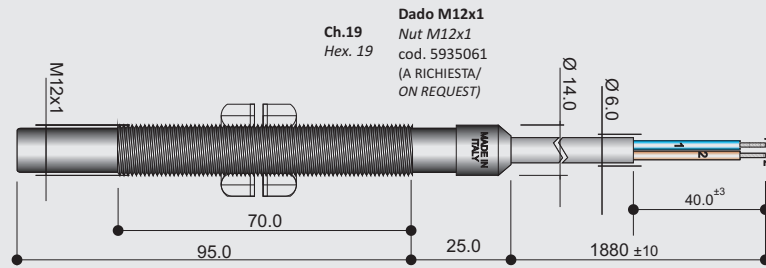
SMP
SENSORI MAGNETICI DI PROSSIMITÀ
PER ASCENSORI
PROXIMITY MAGNETIC SENSORS
FOR LIFT APPLICATIONS

SERIE
SMP12M & SMP8524

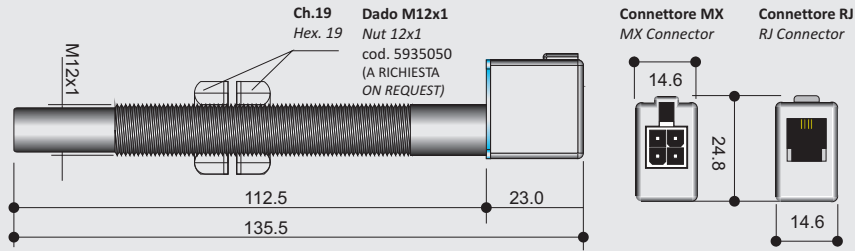
SENSORI MAGNETICI
MAGNETIC SENSORS
MAGNETSENSOREN
CAPTEURS MAGNETC
SENSORES MAGNETICOS



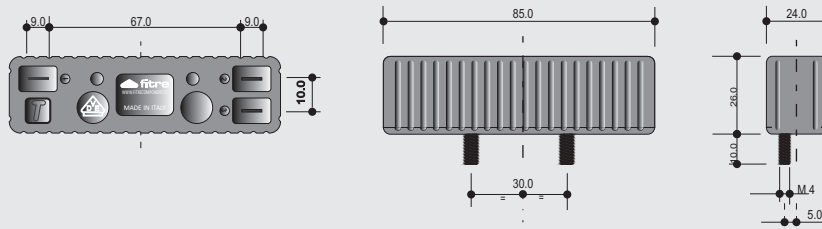
SENSORI PERSONALIZZATI
CUSTOM SENSORS
KUNDENSPEZIFISCHE SENSOREN
CAPTEURS DE MESURE
SENSORES PERSONALIZADOS

SERIE SMP12M


<p>NO $\overline{}$ 200V= 300V~ 70VA - 1.5A</p> <p>SMP12M-001 6691351</p>	Nero Black Schwarz Noir Negro	<p>1880 ±10 Cavo / Cable / Kabel / Cable / Cable 2 x 0.50</p>	NO Vac/dc=300/200 A =1.5 / VA = 70
<p>NC $\overline{}$ 400V= 400V~ 60VA - 1.0A</p> <p>SMP12M-002 6691352</p>	Verde Green Grün Vert Verde	<p>1880 ±10 Cavo / Cable / Kabel / Cable / Cable 2 x 0.50</p>	NC Vac/dc=400/400 A =1.0 / VA = 60
<p>NO $\overline{}$ 250V= 250V~ 120VA - 3.0A BISTABILE</p> <p>SMP12M-003 6691858</p>	Blu Blue Blau Bleu Azul	<p>1880 ±10 Cavo / Cable / Kabel / Cable / Cable 2 x 0.50</p>	NO BI Vac/dc=250/250 A =3.0 / VA = 120
<p>CO $\overline{}$ 230V= 230V~ 60VA - 1.0A BISTABILE</p> <p>SMP12M-004 6691859</p>	Rosso Red Rot Rouge Rojo	<p>1880 ±10 Cavo / Cable / Kabel / Cable / Cable 3 x 0.50</p>	CO BI Vac/dc=230/230 A =1.0 / VA = 60
<p>NO $\overline{}$ 250V= 250V~ 120VA - 3.0A</p> <p>SMP12M-005 6691358</p>	Grigio Gray Grau Gris Gris	<p>1880 ±10 Cavo / Cable / Kabel / Cable / Cable 2 x 0.50</p>	NO Vac/dc=250/250 A =3.0 / VA = 120
<p>NC $\overline{}$ 230V= 230V~ 60VA - 1.0A</p> <p>SMP12M-006 6691373</p>	Bianco White Weiss Blanc Blanco	<p>1880 ±10 Cavo / Cable / Kabel / Cable / Cable 2 x 0.50</p>	NC Vac/dc=230/230 A =1.0 / VA = 60
<p>NO $\overline{}$ 200V= 300V~ 70VA - 1.5A NC $\overline{}$ 150V= 150V~ 20VA - 1.0A</p> <p>SMP12M-007 6691450</p>	Giallo Yellow Gelb Jaune Amarillo	<p>1880 ±10 Cavo / Cable / Kabel / Cable / Cable 2 x 0.50</p>	NO+NC NO_Vac/dc=300/200 A =1.5 / VA = 70 NC_Vac/dc=150/150 A =1.0 / VA = 20
<p>NO $\overline{}$ 150V= 150V~ 10VA - 1.0A NC $\overline{}$ 150V= 150V~ 20VA - 1.0A</p> <p>SMP12M-008 6691451</p>	Viola Violet Violett Violet Violeta	<p>1880 ±10 Cavo / Cable / Kabel / Cable / Cable 2 x 0.50</p>	NO+NC NO_Vac/dc=150/100 A =0.5 / VA = 10 NC_Vac/dc=150/150 A =1.0 / VA = 20
<p>NO $\overline{}$ 200V= 300V~ 70VA - 1.5A NC $\overline{}$ 200V= 300V~ 70VA - 1.5A</p> <p>SMP12M-009 6691452</p>	Rosa Pink Pink Rose Rosa	<p>1880 ±10 Cavo / Cable / Kabel / Cable / Cable 2 x 0.50</p>	NO+NO NO_Vac/dc=300/200 A =1.5 / VA = 70 NO_Vac/dc=300/200 A =1.5 / VA = 70
<p>NO $\overline{}$ 200V= 300V~ 70VA - 1.5A</p> <p>SMP12M-015 6691405</p>	Nero Black Schwarz Noir Negro	<p>4000 ±20 Cavo / Cable / Kabel / Cable / Cable 2 x 0.50</p>	NO Vac/dc=300/200 A =1.5 / VA = 70
<p>CO $\overline{}$ 150V= 150V~ 20VA - 1.0A</p> <p>SMP12M-016 6691385</p>	Marrone Brown Braun Brun Marron	<p>1880 ±10 Cavo / Cable / Kabel / Cable / Cable 3 x 0.50</p>	SC Vac/dc=150/150 A =1.0 / VA = 20



<p>NO 200V= 300V~ 70VA - 1.5A</p> <p>Nero, Black, Schwarz, Noir, Negro</p>	<p>SMP12M-001RJ 6691464</p> <p>SMP12M-001MX 6691474</p>	<p>NO Vac/dc = 300/200 A = 1.5 / VA = 70</p>
<p>NO 250V= 250V~ 120VA - 3.0A BISTABILE</p> <p>Blu, Blue, Blau, Bleu, Azul</p>	<p>SMP12M-003RJ 6691460</p> <p>SMP12M-003MX 6691470</p>	<p>NO BI Vac/dc = 250/250 A = 3.0 / VA = 120</p>
<p>NO 150V= 150V~ 10VA - 1.0A NC 150V= 150V~ 20VA - 1.0A</p> <p>Viola, Violet, Violet, Violet, Violeta</p>	<p>SMP12M-008RJ 6691461</p> <p>SMP12M-008MX 6691471</p>	<p>NO+NC NO_Vac/dc=150/100 A=0.5 / VA = 10 NC_Vac/dc=30/30 A=0.2 / VA = 3</p>
<p>NO 200V= 300V~ 70VA - 1.5A NO 200V= 300V~ 70VA - 1.5A</p> <p>Rosa, Pink, Pink, Rose, Rosa</p>	<p>SMP12M-009RJ 6691462</p> <p>SMP12M-009MX 6691472</p>	<p>NO+NO NO_Vac/dc=300/200 A=1.5 / VA = 70 NO_Vac/dc=300/200 A=1.5 / VA = 70</p>
<p>NC 150V= 150V~ 20VA - 1.0A</p> <p>Verde, Green, Grun, Vert, Verde</p>	<p>SMP12M-011RJ 6691463</p> <p>SMP12M-011MX 6691473</p>	<p>NC Vac/dc=150/150 A=1.0 / VA = 20</p>
<p>CO 150V= 150V~ 20VA - 1.0A</p> <p>Marrone, Brown, Braun, Brun, Marron</p>	<p>SMP12M-016RJ 6691465</p> <p>SMP12M-016MX 6691475</p>	<p>SC Vac/dc=150/150 A=1.0 / VA = 20</p>



SMP 8524 A
6691820

Nero, Black, Schwarz, Noir, Negro

NO 250Vac/250Vdc 120VA 3.0A BISTABILE

NO BISTABILE
Vac/Vdc = 250/250
A = 3.0 / VA = 120

SMP 8524 AF
6691821

Nero, Black, Schwarz, Noir, Negro

NO 250Vac/250Vdc 120VA 3.0A BISTABILE

NO BISTABILE
Vac/Vdc = 250/250
A = 3.0 / VA = 120

SMP 8524 C
6691825

Nero, Black, Schwarz, Noir, Negro

NC 230Vac/230Vdc 60VA 1.0A BISTABILE

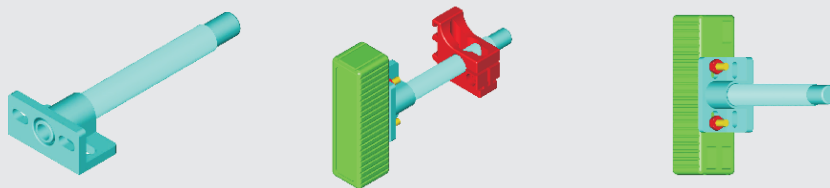
NC BISTABILE
Vac/Vdc = 230/230
A = 1.0 / VA = 60

ACCESSORI / ACCESSORIES

SQUADRETTA DI SUPPORTO ASSIEMATA
ASSEMBLED MOUNT BRACKET

DIMENSIONI DI INGOMBRO
OVERALL DIMENSIONS

Codice / Code	L	T	H
6619226	40	20	22



SUPPORTO UNIVERSALE
UNIVERSAL MOUNT

DIMENSIONI DI INGOMBRO
OVERALL DIMENSIONS

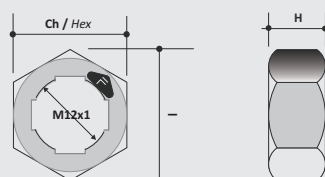
Codice / Code	L	H	T
6691174	43.0	39.0	20.0
6619279	23.0	26.8	16.0



DADO FISSAGGIO SENSORI CILINDRICI SMP12M
NUT FIXING CYLINDRICAL SENSORS SMP12M

DIMENSIONI DI INGOMBRO
OVERALL DIMENSIONS

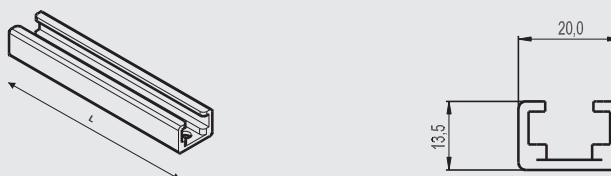
Codice / Code	Ch / Hex	l	H
5935061	19.0	21.3	8 ^{±0.2}



GUIDA DI FISSAGGIO
JAW FIXING

DIMENSIONI DI INGOMBRO
OVERALL DIMENSIONS

Codice / Code	L
3418402	100

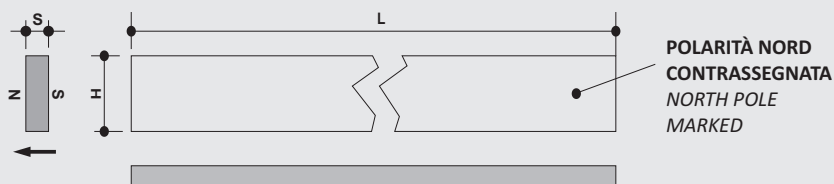


MAGNETI / MAGNETS

MAGNETI per SENSORI MONOSTABILI
MAGNETS FOR MONOSTABLE SENSORS

DIMENSIONI DI INGOMBRO
OVERALL DIMENSIONS

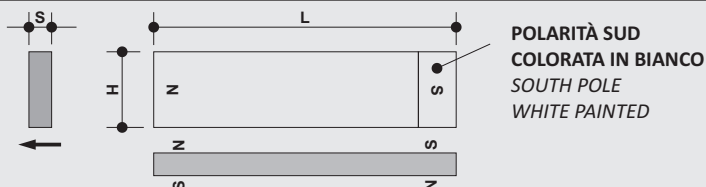
Codice / Code	H	S	L
2751546	20	6	150
2751547	20	6	200
2751548	20	6	300
2751550	20	6	75
2751558	15	6	150



MAGNETE per SENSORI BISTABILI
MAGNETS for BISTABLE SENSORS

DIMENSIONI DI INGOMBRO
OVERALL DIMENSIONS

Codice / Code	H	S	L
2751549	20	6	80



MAGNETI IN FERRITE
FERRITE MAGNETS

DIMENSIONI DI INGOMBRO
OVERALL DIMENSIONS

Codice / Code	D	d	H
2751520	Ø20	Ø4	10

POLARITÀ SUD
COLORATA IN BIANCO
SOUTH POLE
WHITE PAINTED

